

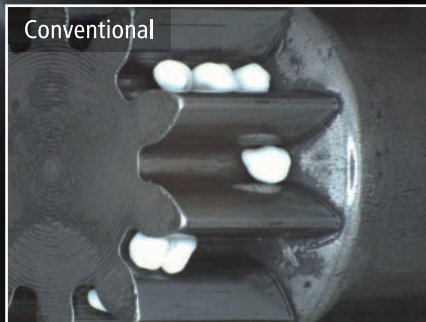
Luster
Micro
Cutting

Abrasive media for barrel finishing

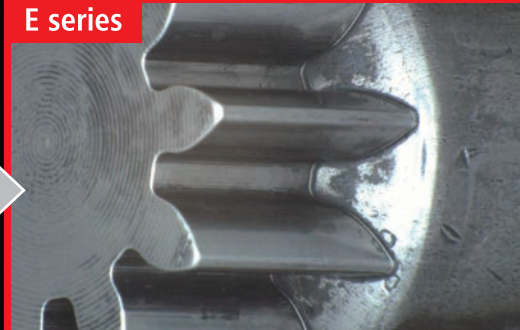
Precise media **E series**

No clogging × **Hit corners**

Gear

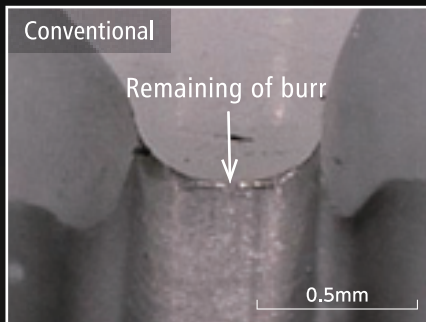


E series



No abrasive media clogged

Gear

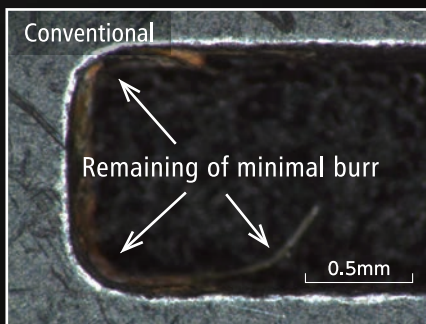


E series

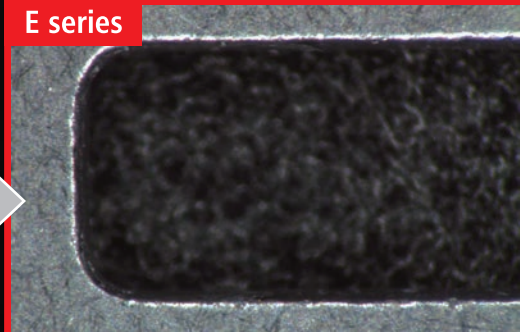


Hit the corner !

Pressed parts



E series



Hit the corner !

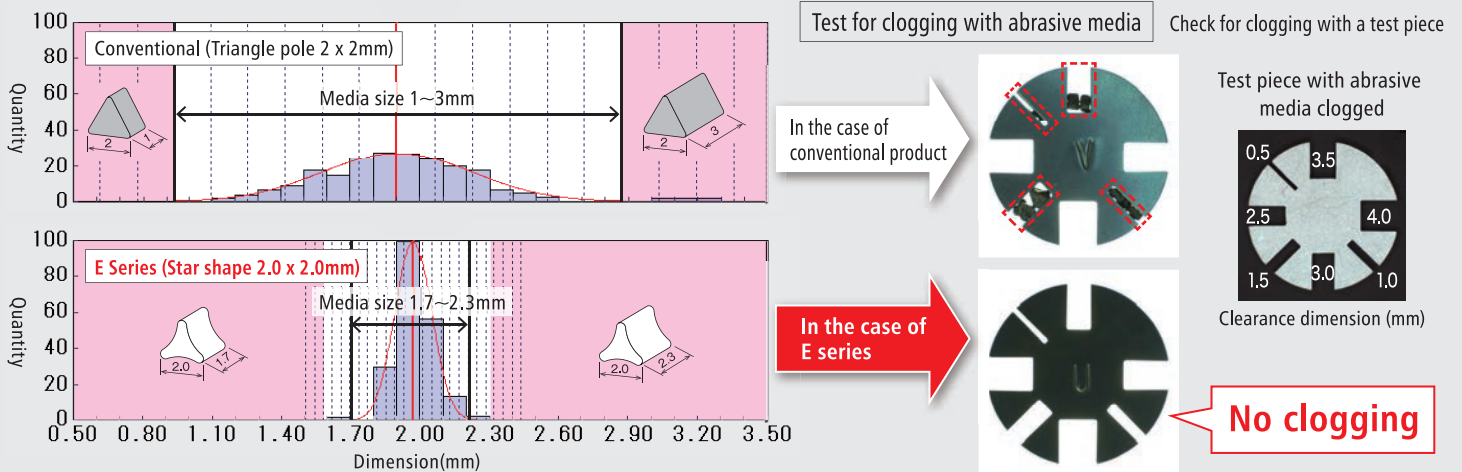
A large size abrasive media in the conventional product needs to avoid clogging of abrasive media.

In case of
E series

No clogging of abrasive media by optimal size, and finishing to the corners possible !

Precise media for barrel finishing E series

Size Tolerance (Comparison of C size variation and abrasive media clogging)



Example:
For a workpiece
with 3mm groove

Conventional
product

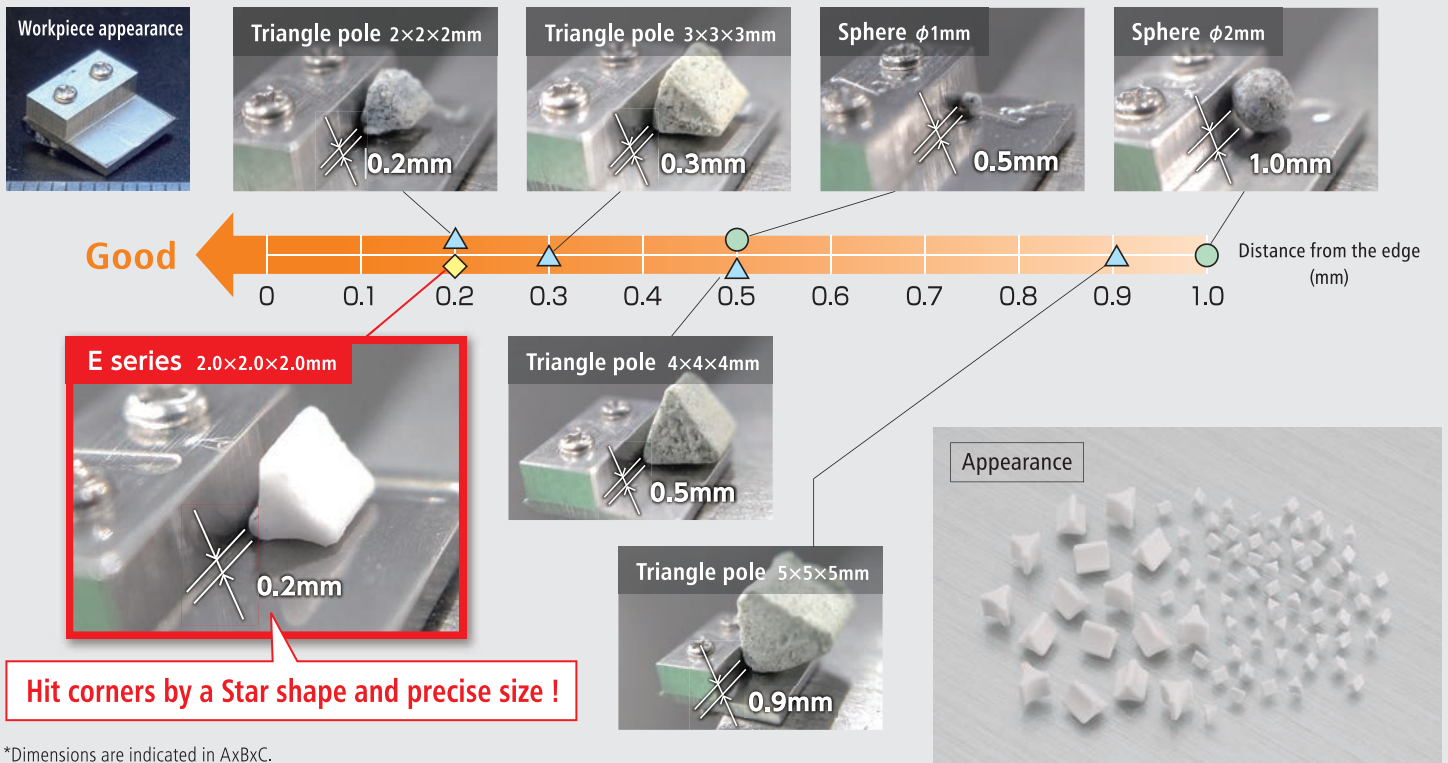
No choice but to select abrasive media of 5mm
or more to avoid abrasive media clogging.

E series

2.0 mm size abrasive media can be used
without clogging !

Abrasive media clogging is reduced by a high dimensional accuracy !

Comparison of the hit of workpiece to corners (Checked by a specially made workpiece)



*Dimensions are indicated in AxBxC.

*Sphere shaped and triangle pole shaped abrasive media are our existing products.

Specifications					
Shape	Item name	Application	Item number	Size(mm) (A×B×C)	Package
A (Star) Straight cut ∠90° 	EXA EWA	Micro cutting Luster	5.0	5.0×5.0×5.0	5kg/ Carton
			4.0	4.0×4.0×4.0	
			3.0	3.0×3.0×3.0	
			2.0	2.0×2.0×2.0	

*Other shape such as T (Triangle) and RP (Cylinder) are also available.

Contact for product information and purchase

TIPTON Tipton Corp.

Head Office 3-19-21 Toyoda, Minami-Ku, Nagoya, Aichi Prefecture 457-8566 Japan
Tel: +81-52-692-6666 Fax: +81-52-692-9445

Overseas Sales 3-19-21 Toyoda, Minami-Ku, Nagoya, Aichi Prefecture 457-8566 Japan
Tel: +81-52-692-0901 Fax: +81-52-692-9445

Tobishima Factory 3-25-1 Odakara, Tobishima-Mura, Ama-Gun, Aichi Prefecture 490-1438 Japan
Tel: +81-567-56-7500 Fax: +81-567-56-7513

http://www.tipton.co.jp/english/ E-mail overseas@tipton.co.jp