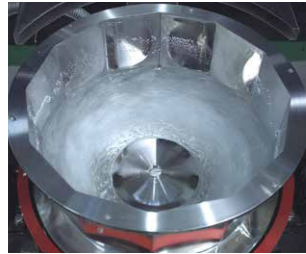


Easy Maintenance

Easy Cleaning in Just a Minute



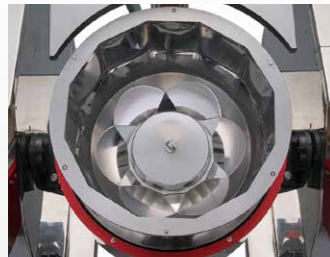
After Gathering water, the high-speed disc spins; create a vortex; that cleans the tub in just a minute. Adding hot water or detergent increases its effectiveness.

Easy Drainage in a Few Seconds



ECXPs has a dumping mechanism and open top tub for users to easily drain dust and detergents then check for any remains in seconds. After draining, the tub is then lightly scrubbed and is ready for the next batch.

Stainless Steel and Urethane Bowls for Different Uses



Stainless Steel Drum and Disc

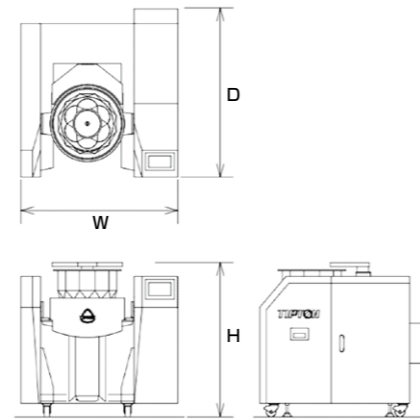
Its ease of cleaning and disinfection is hygienic as it stops discoloration and breeding of bacteria. The inner tub has a sanitary buffed surface to stop sticking making ECX-PS perfect for the medical and food industries.



Urethane Drum and Disc

Urethane rubber has high durability when processing with abrasive powders for grinding/polishing. Also, its low adhesivity prevents sticking and sedimentation; perfect for mass finishing and base chemical production.

Specifications



Model	Size	Weight	Capacity
ECX40Ps	W1250 × D1300 × H1200mm	約800kg	約15L
ECX200Ps	W1800 × D1600 × H1450mm	約1500kg	約80L

- The specifications of machines may be changed for improvement without prior notice.
- Custom Specifications are available upon request.

Tipton Corp.

<https://www.tipton.co.jp/english/>

Head Office
3-19-21 Toyoda, Minami-Ku, Nagoya,
Aichi Prefecture 457-8566 Japan
Tel : +81-52-692-6666
Fax: +81-52-692-9445

Overseas Sales
3-19-21 Toyoda, Minami-Ku, Nagoya,
Aichi Prefecture 457-8566 Japan
Tel : +81-52-692-0901
Fax: +81-52-692-9445

Tobishima Factory
3-25-1 Odakara, Tobishima-Mura, Ama-Gun,
Aichi Prefecture 490-1438 Japan
Tel : +81-567-56-7500
Fax: +81-567-56-7513

Quality Assurance Section
for Product Quality

Tel : +81-567-56-7503
Fax: +81-567-56-7516

Engineering Section
for Machine Maintenance

Tel : +81-567-56-7504
Fax: +81-567-56-7514

E-mail

sales-department@tipton.co.jp
overseas@tipton.co.jp

Note) All unapproved reproduction
of a report a photograph, etc are
forbidden found in this catalog.

This catalog is printed using
environment-friendly vegetable ink.

23/06/A

A device for powder mixing, granulation and refinement



ECXPs [pi:z]



Mixing, granulation and refining for powders, all in one device

Patent No.4740419
No.5603808

Made in
Japan

Case Study

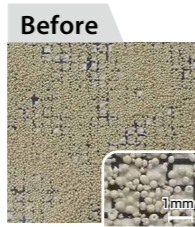


Granulation

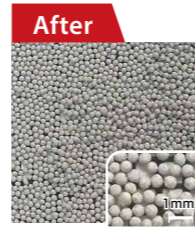
Making small grains to big grains.

Revolving Granulation

The particles in the base powder bond and expand in a process similar to a rolling snowball.



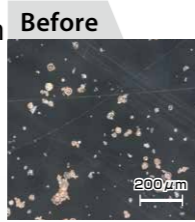
Revolving Granulation



- ▶ Sphericalizes
- ▶ Consistent particle diameter
- ▶ Density Consolidation

Agitation Granulation

Its Agitating (stirring) power agglomerates (clumps) the powder together.



Agitation Granulation



- ▶ Consistent Particle Diameter
- ▶ Adjusts densities



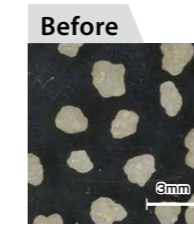
ECX Ps

Spherical Particle Sizing

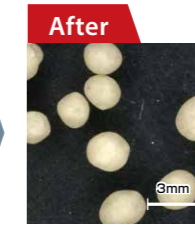
Sphericalizes Irregularly Shaped Particles to Consistent Sizes

Granulation

Its vortex flow continuously collides a countless number of particles in all directions to create a smooth shape.



Granulation



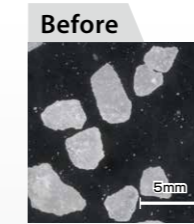
- ▶ Consistent Particle Diameter
- ▶ Surface Smoothing

Coating

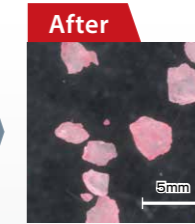
Coating particles.

Spray Coating

Coating agents are highly refined and stick better the stick evenly to the surface.



Spray Coating



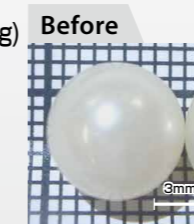
- ▶ Uniform coating

Polishing

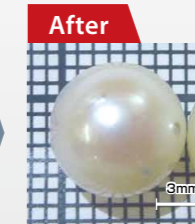
Perfect for precise polishing with agents/media under 1mm in diameter

Dry Barrelling (Polishing)

It agitates work with micro media and polishing agents with <1mm Diameter for precise surface finishing.



Dry Barrelling (Polishing)



- ▶ Polishes every nook and cranny by using highly fine powders
- ▶ Achieves a super mirror finish <math><0.005\mu\text{m}</math>

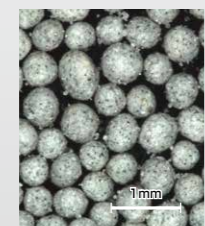
Features



- ▶ Higher Sphericity (Revolving Granulation)

Aspect Ratio

Previous Tech.



1.13

ECX Ps

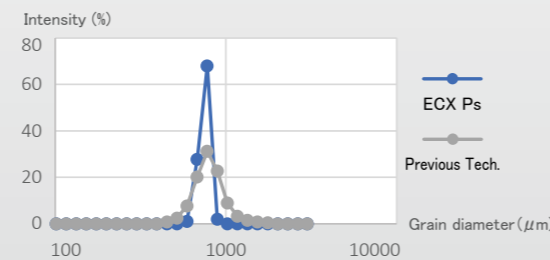


1.04

*Aspect Ratio: compares the longest and shortest diameters. 1=perfect sphere.

- ▶ Sharp particle Distribution

Standard Deviation



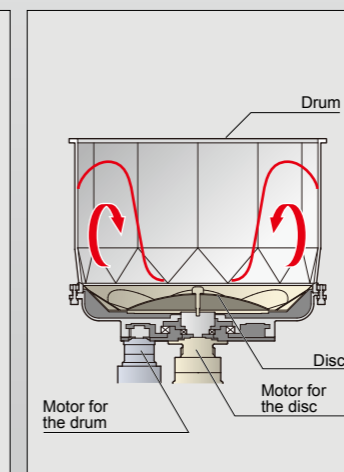
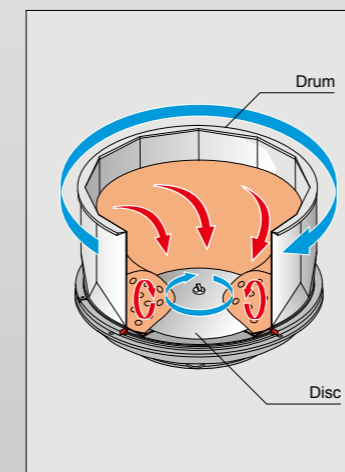
Previous Tech. 157.4 ECX Ps 90.7

Principle of Flow



Its multispin tech supports super light and highly refined particles. Patent4740419

Its brilliant disc stops sticking



The centrifugal force of high RPM spinning disc forces particles into the sides then the inner wall of the drum forces the particles up.

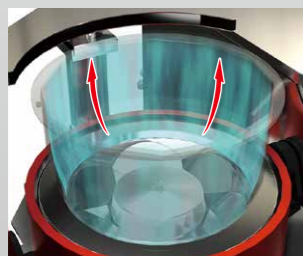
The particles risen to the top, drop to the bottom then return to the center of the disc. This is repeated and creates vortex.

The vortex's flow does not weaken when revolving lightly particles at low speeds; the drum rotating in the opposite direction of the disc causes flow resistance, making the flowing strength of the vortex even stronger.

Patent5603808

- ▶ Can Process Grains Under 1mm in Size

Narrow Gap and Air Flow



There is only a miniscule gap between the rotating disc and drum. From this gap, there is a continual flow of air which stops base powders and fine media from falling.

- ▶ Base Powders don't Stick

A brilliant shape that reduces the loss of base powders.



Its original, brilliant shape features multiple, concave planes that increases its vortex flow strength and form. At the same time, the centrifugal force from its vortex flow shears particles inside the pan and reduces sticking to its sides. Its lack of convex planes stops unwanted sedimentation.