

Dry Type Barrel Finishing Machine

# Drag-Finish



Tipton's Drag Finisher 1st machine  
made in 1977



**Achievements of over 40 years!**

Full model change of Drag Finish in response to user's voice

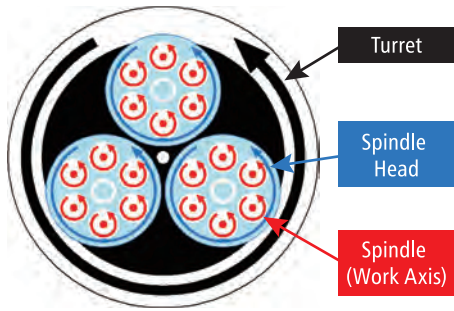
# Mirror finish without scratches, achieving Ra <math><0.005 \mu\text{m}</math> with special media.

## Feature

- 6 degrees of parts axis tilt + forward / reverse rotation.
- Rotation speed up / down by 50%, high speed reversal is possible.
- Detachable drill chuck setup outside of the machine.
- Index train automatic stop + brake motor.
- Built-in dust collector, lining in barrel tank.
- Multi-speed program operation on touch panel.
- Customize with a variety of options and requests.



## Structure / Principle



When the turret rotates once, the spindle head rotates 3 times and the spindle rotates 9 times.  
The spindle head is rotated by the dedicated motor that can be further accelerated or decelerated.  
Polishing is performed by submerging the parts axis in the barrel tank and spinning it from low speed to high speed with forward and reverse.

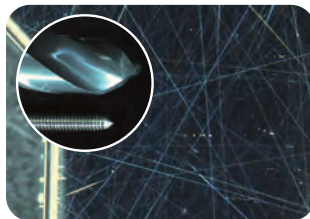
## Application

- Carbide tool Radiusing & Droplet Removal.
  - Cutting tool Mirror finishing.
  - Artificial joint Surface finishing.
  - Precision parts Mirror finishing.
  - Metal parts Smooth to Mirror finish.
  - 3D printer molded products Surface finish.
- etc.

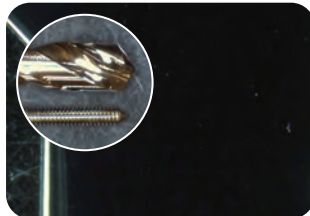
## Processing Example

### Mirror Finishing

Before



After



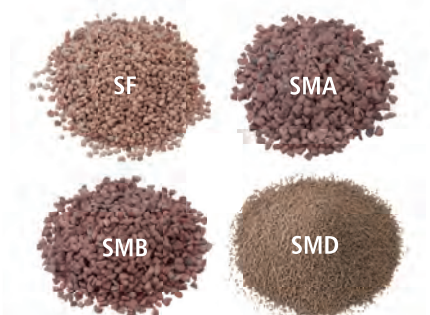
Ra <math><0.005 \mu\text{m}</math>  
Gloss over 1000

### Tool's Edge Radiusing



Chipping eliminating

## Soft Media for Dry Process



- SF : Soft metal / Mirror polishing
- SMA : Rough / Medium finishing
- SMB : Mirror polishing
- SMD : Super mirror polishing
- Size : #5~60
- Other : Custom prototype are also available!

## Specifications

Model	Footprint	Overall Height	Barrel Capacity	Parts Axis	Chuck Type	Weight
CF3-6	1450mm×1300mm	2650mm	Approx.160L	6axes×3base=18axes	Keyless drill chucks 0.8mm~10.0mm	Approx.1700kg



Head Office 3-19-21 Toyoda, Minami-Ku, Nagoya, Aichi Prefecture 457-8566 Japan  
Tel: +81-52-692-6666 Fax: +81-52-692-9445

Headquarter-Sales 3-19-21 Toyoda, Minami-Ku, Nagoya, Aichi Prefecture 457-8566 Japan  
Tel: +81-52-692-7175 Fax: +81-52-692-0249

Tobishima Factory 3-25-1 Odakara, Tobishima-Mura, Ama-Gun, Aichi Prefecture 490-1438 Japan  
Tel: +81-567-56-7500 Fax: +81-567-56-7513

Quality Assurance Section for Product Quality Tel: +81-567-56-7503 Fax: +81-567-56-7516  
Engineering Section for Machine Maintenance Tel: +81-567-56-7504 Fax: +81-567-56-7514

Web Site <https://www.tipton.co.jp/english/>  
E-mail [sales-department@tipton.co.jp](mailto:sales-department@tipton.co.jp)  
[overseas@tipton.co.jp](mailto:overseas@tipton.co.jp)

## •INQUIRIES

※All unapproved reproductions of a report, a photograph, etc are forbidden found in this catalog.