

**Super  
Mirror  
Finish**

Soft media for dry mass finishing

**SMD**



# Super Mirror Finish

Surface smoothness  
 $Ra < 0.005\mu m$  achieved!!

New area!  
Gloss level  $> 1,000$

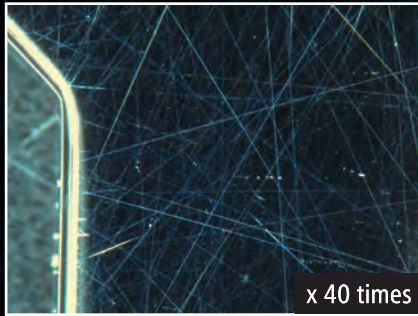
Best suited for carbide parts with  
its diamond powder abrasives

# Super Mirror Finish

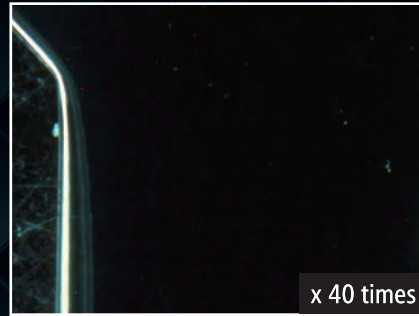
Soft media for dry mass finishing **SMD**

**Surface smoothness Ra<0.005μm achieved!**

Before finishing



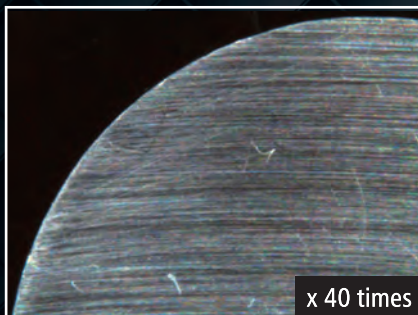
After finishing



**Finishing marks disappear!**

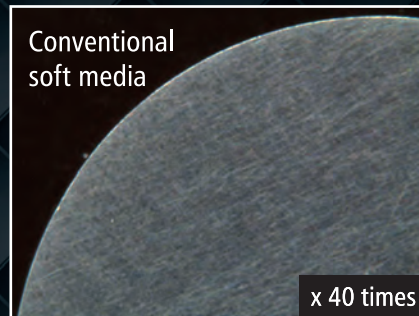
**New area! Gloss level>1,000**

Before finishing



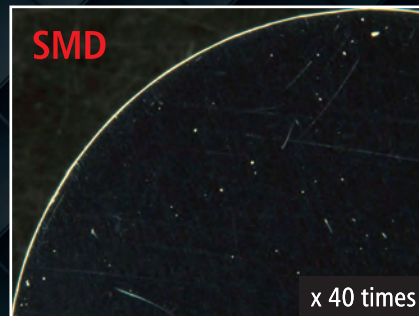
Gloss level 280

After finishing



Conventional soft media

Gloss level 660



**SMD**

**Gloss level 1,120**

\*Measurement method: Based on JIS Z8741 (measurement angle 20°)

**Suitable workpieces**

Cutting tool

Artificial bone

Jewelry

Bearing

HDD parts

Carbide parts

Specifications	SMD	Appearance
Abrasives	Diamond powder	
Size	#5 ~ #60	
Product bulk density	0.69g/cm <sup>3</sup>	
Package	20kg/Carton	

\*Product bulk density shows typical value.  
\*Please refer to SDS on storage precautions.

Contact us for more product information and purchase



Head Office 3-19-21 Toyoda, Minami-Ku, Nagoya, Aichi Prefecture 457-8566 Japan  
Tel: +81-52-692-6666 Fax: +81-52-692-9445

Headquarter-Sales 3-19-21 Toyoda, Minami-Ku, Nagoya, Aichi Prefecture 457-8566 Japan  
Tel: +81-52-692-7175 Fax: +81-52-692-0249

Tobishima Factory 3-25-1 Odakara, Tobishima-Mura, Ama-Gun, Aichi Prefecture 490-1438 Japan  
Tel: +81-567-56-7500 Fax: +81-567-56-7513

<https://www.tipton.co.jp/english/> E-mail [overseas@tipton.co.jp](mailto:overseas@tipton.co.jp)